




Rubber Floors & More

Rubber Floors & More

 404-806-7650

 706-864-3567

 www.rubberfloorsandmore.com

 103 Chestatee Industrial Drive, Dahlonega, GA. 30533



Technological innovation

Ensure our strong technological strength



01 TENSILE PROPERTY TEST

Instron: Equipments: USA Instron.
Electronic universal testing machine
places different materials on a tensile tester.
23Mpa: Maximum tensile strength is 23Mpa.
Select the best set of tensile properties.



02 BENDING PERFORMANCE TEST

Instron: Equipments: USA Instron.
Bend test of different materials.
Make sample bents 180 degrees with the same force.
Select the best set of flexural properties.

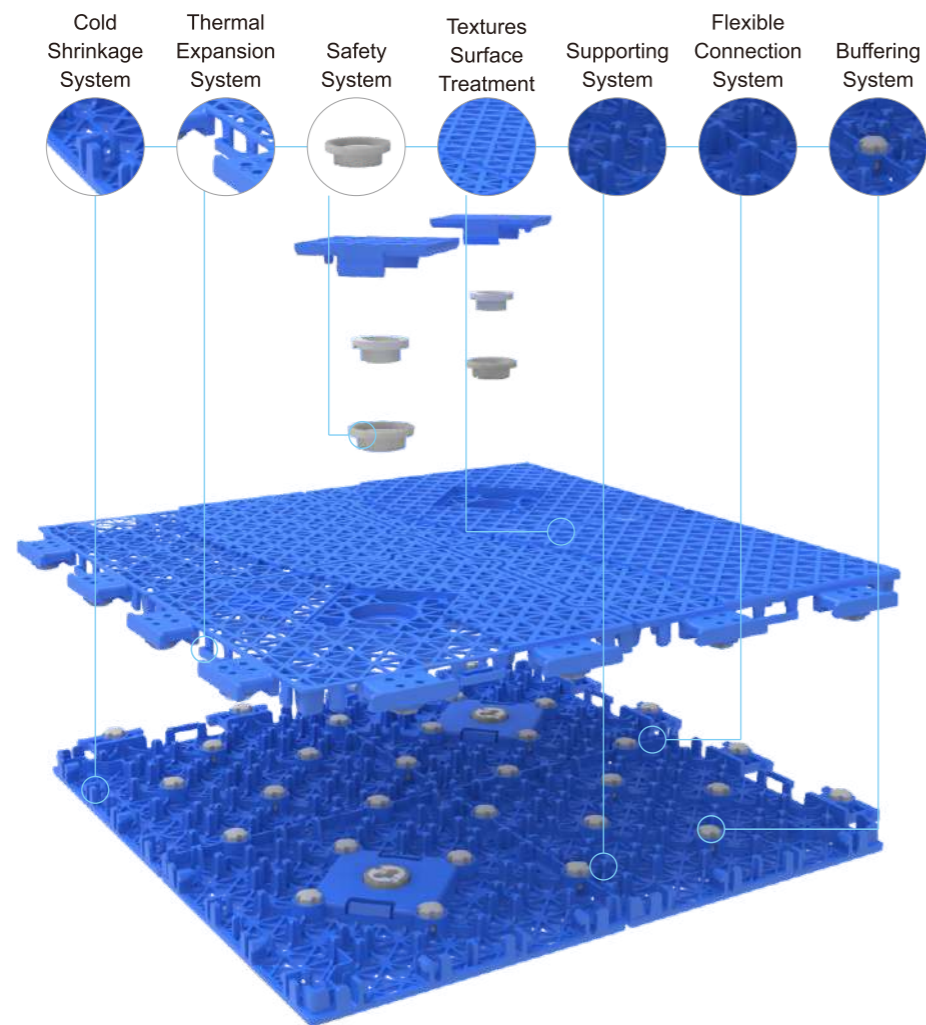


03 ARTIFICIAL AGING TEST

Xenon weather resistant artificial aging test.
Experience three months xenon lamp irradiation in
the test chamber, the durability of materials will
undergo more stringent environmental adaptability
challenge. And then, we will got the final data which
is the product life.

COURT PRODUCTS

ELASTIC GRID UNITY



Thermal Expansion System

It consists of more than 4 sets of resilience arms & elastic pillars. Prevent the court from bulging caused by the rise in temperature.

Texture Surface Treatment

No reflection, don't glare, better friction.

Safety System

One tile has 2 special fixed structure designs. Expand the installation area; provide more buffer clearance and better shock absorption. Ensure construction accuracy and safety; be windproof, anti-theft, and anti-displacement.

Raw Materials

Modified polypropylene, color master batch, antioxidant, light stabilizer, TPE, etc.

Product Models And Specifications

Size: 305 mm × 305 mm × 14.5 mm (±0.15mm)
Weight: 315 g (±10g)

Cold Shrinkage System

It consists of more than 8 sets of shrapnel & transverse columns to prevent cracks caused by temperature drop.

Supporting System

282 backside columns support high-intensity sports. Ensure well-proportioned ball bounce at each position is the same.

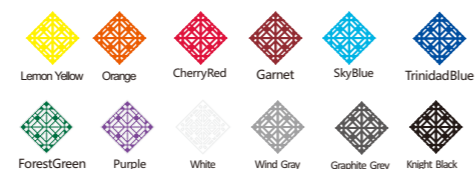
Flexible Connection System

4 sets of arched telescopic joints enhance the ground adhesion force, thermal expansion and contraction performance.

Buffering System

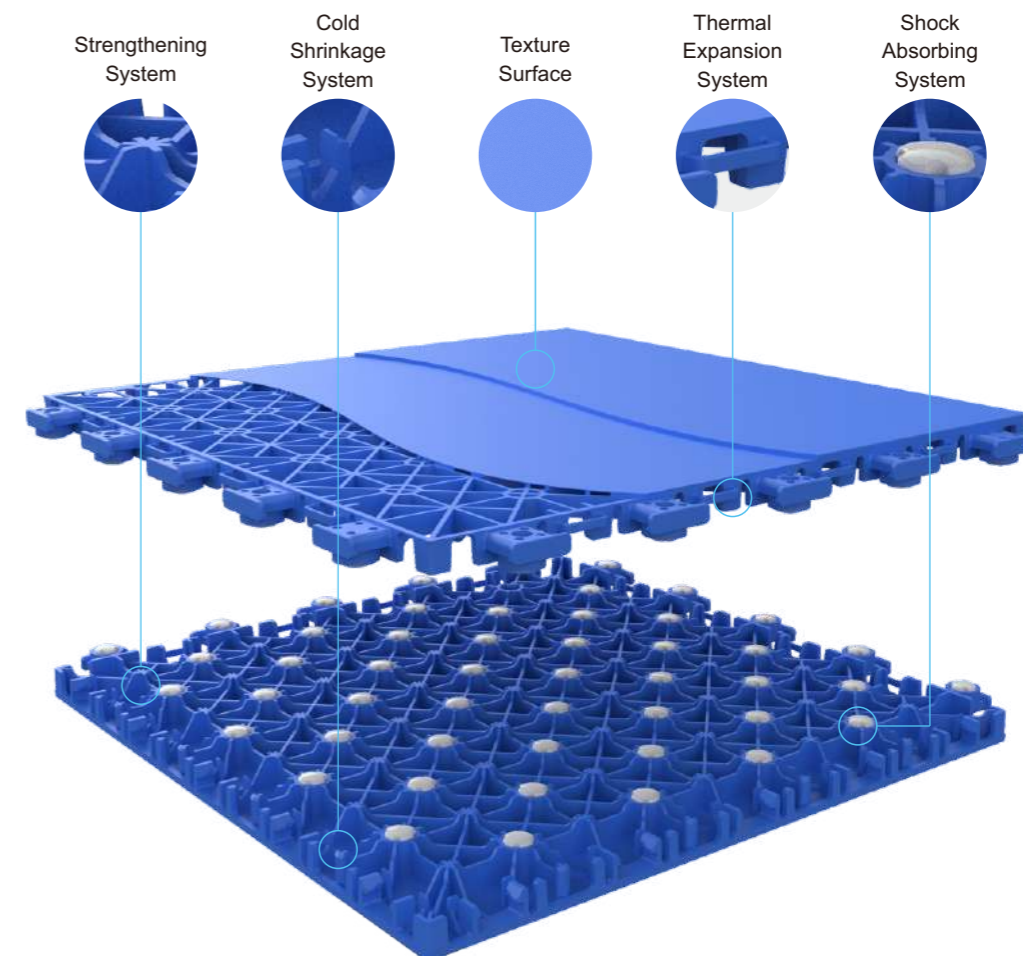
Grid buffer soft connection and 32 elastic cushions uniform decompose the surface pressure. Provide better shock absorption. The high-density energy absorption better protects athlete's knee and ankle joint, also reduces exercise strain.

Product Pattern



COURT PRODUCTS

Elastic Mat



STRENGTHENING SYSTEM

Strengthened Keels make the flooring be stronger, provides better load-bearing capacity.

COLD SHRINKAGE SYSTEM

Consisted of 8 elastic sheets and lateral post; Preventing the court from cracks caused by temperature reduction.

TEXTURE SURFACE

Texture surface treatment, provides better friction performance for indoor sports. No light-reflection, not hurt on players' eyes.

THERMAL EXPANSION SYSTEM

Patent design: 8 group resilience arms & elastic pillars; Preventing the court from bulging caused by the rise in temperature.

SHOCK ABSORBING SYSTEM

50 pcs elastic cushions help to decompose the surface pressures and ensure better ball bounce rate. Reduce the impact on players' joints.

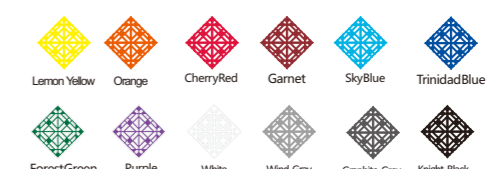
RAW MATERIALS

Modified Polypropylene; Color Master Batch; Antioxidant; Light Stabilizer; TPES; etc.

PRODUCTS MODELS AND SPECIFICATIONS

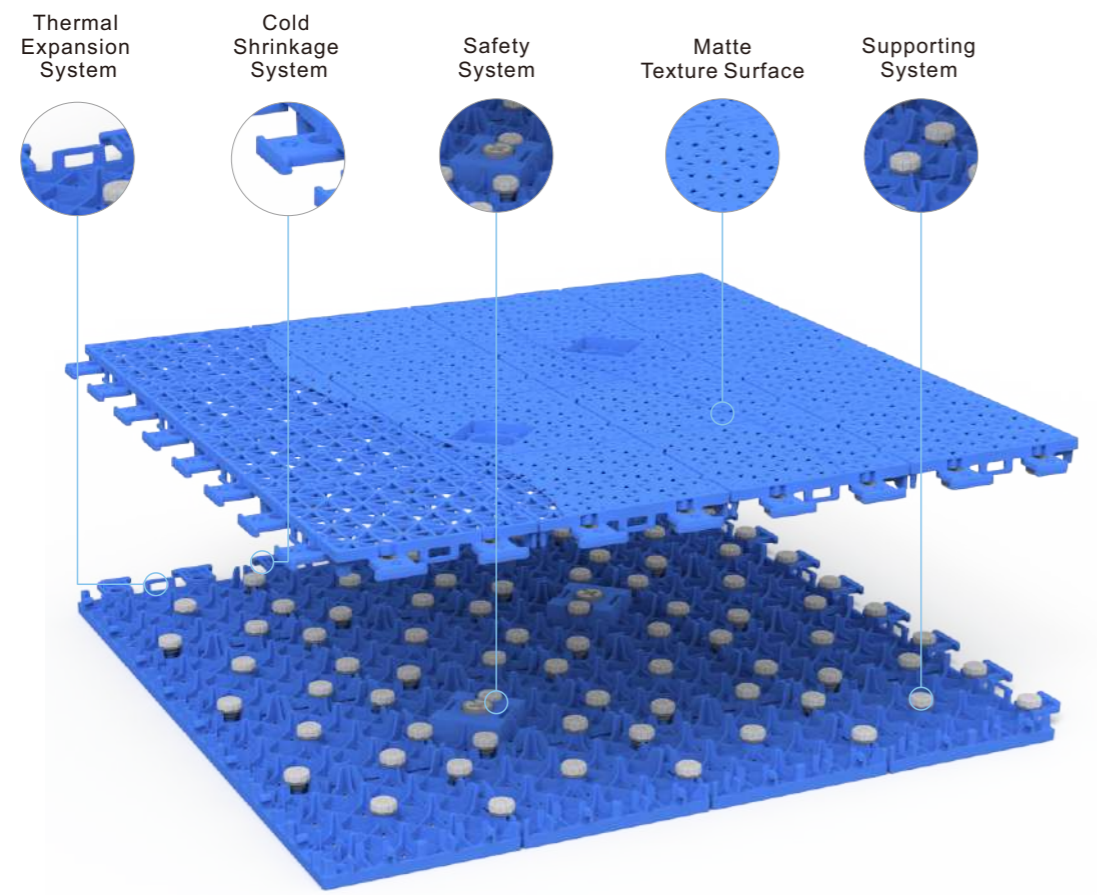
Size: 306.7mm*306.7mm*14.5mm
Weight: 460g(±10g)

Product pattern



COURT PRODUCTS

ELASTIC X



Thermal Expansion System

Thermal Expansion System: It consists of more than 8 sets of resilience arms & elastic pillars. Prevent arching caused by the rise in temperature and ensure that the floor is stretched between 2mm.

Cold Shrinkage System

It consists of 16 sets of shrapnel & transverse columns to prevent cracks caused by temperature drop.

Flexible Connection System

It consists of 16 groups of flexible soft connections to enhance the ground adhesion force.

Safety System

Consists of 2 sets of three-generation fixed blocks, expansion bolts, screws and accommodating holes; Provide better shock absorption. Ensure construction accuracy and safety; Be windproof, anti-theft, anti-displacement and easy to install.

Matte Texture Surface

Matte texture greatly improves friction and has excellent anti-skid effect.

SUPPORTING SYSTEM

Upgraded TPE cushions on the backside, 144 cushions provides better shock absorption and longer lifespan.

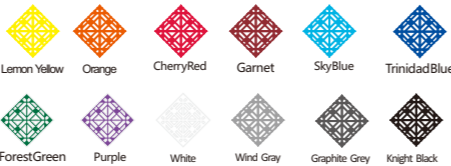
Raw Material

Modified polypropylene, color master batch, antioxidant, light stabilizer, etc.

Size and Weight

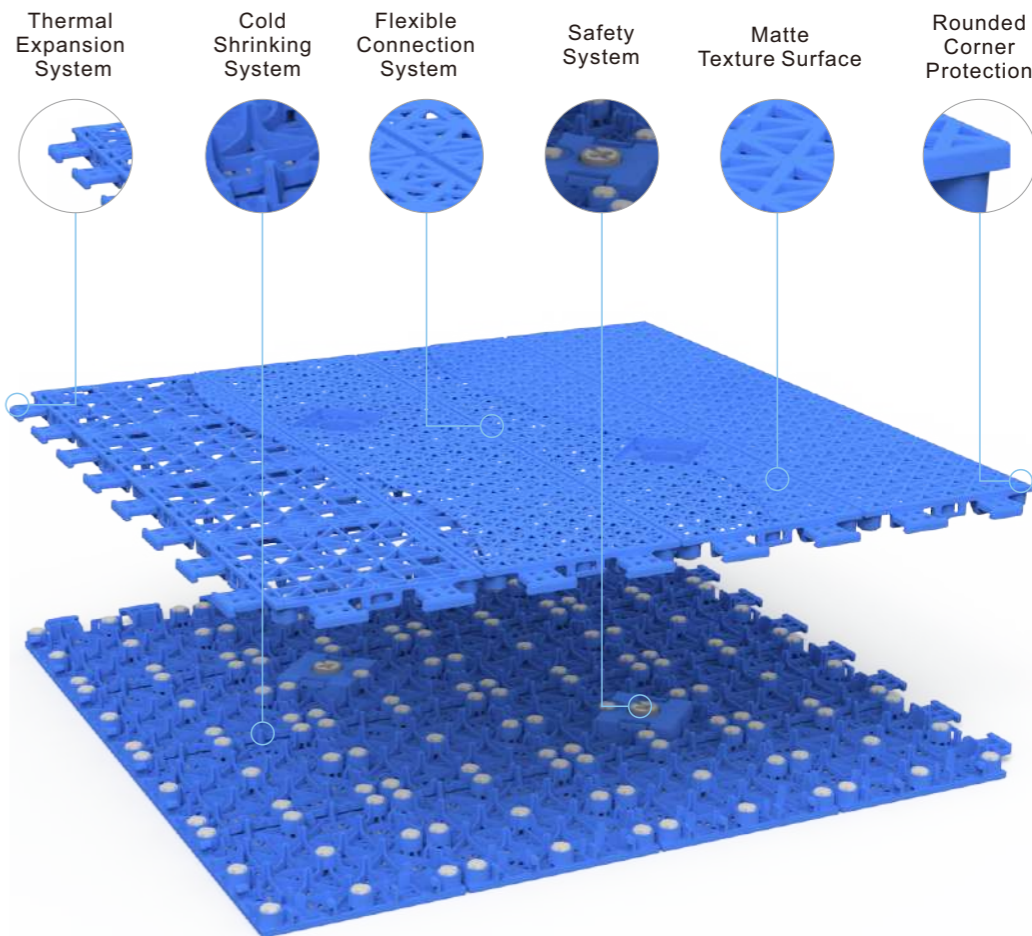
Size:500mm×500mm×19mm (±0.5mmVariable expansion)
Weight:940g/piece(±10g)

Product Pattern



COURT PRODUCTS

ELASTIC DIAMOND



Thermal Expansion System

Thermal Expansion System: It consists of more than 8 sets of resilience arms & elastic pillars. Prevent arching caused by the rise in temperature and ensure that the floor is stretched between 2mm.

Cold Shrinkage System

It consists of 16 sets of shrapnel & transverse columns to prevent cracks caused by temperature drop.

Flexible Connection System

It consists of 16 groups of flexible soft connections to enhance the ground adhesion force.

Safety System

Consists of 2 sets of three-generation fixed blocks, expansion bolts, screws and accommodating holes; Provide better shock absorption. Ensure construction accuracy and safety; Be windproof, anti-theft, anti-displacement and easy to install.

Matte Texture Surface

Matte texture greatly improves friction and has excellent anti-skid effect.

SUPPORTING SYSTEM

80 TPE cushions on the backside, help to decompose the surface pressures and ensure better shock absorption to protect athlete's joints.

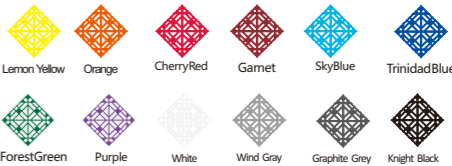
Raw Material

Modified polypropylene, color master batch, antioxidant, light stabilizer, etc.

Size and Weight

Size:500mm×500mm×15.8mm (±0.5mmVariable expansion)
Weight:830g/piece(±10g)

Product Pattern

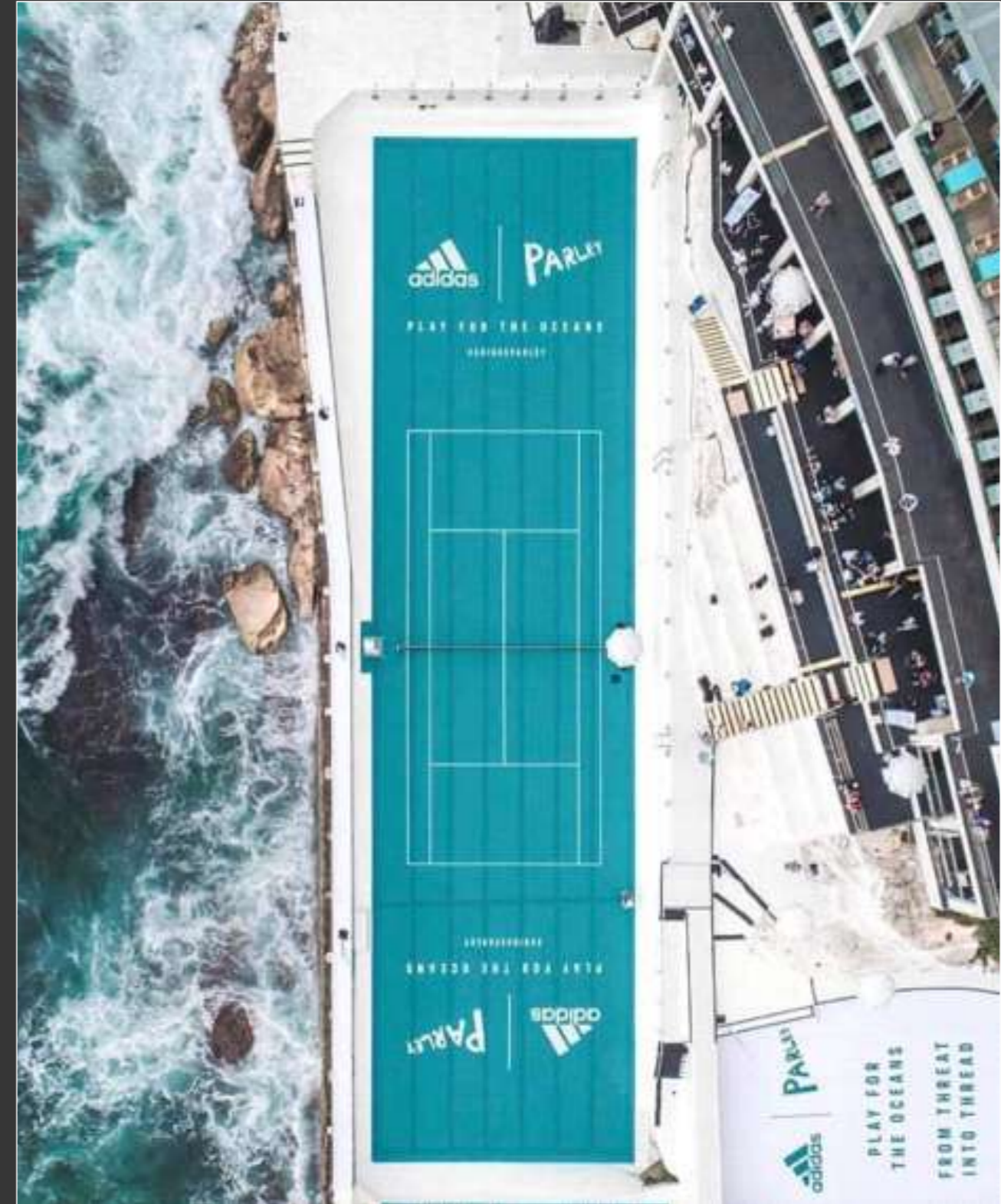




Nike Courts



Adidas Courts





NBA Basketball Court



Olympics Court







Kindergarten Series



Community Board of Villa Carmen De Capira



**Vision of Knowledge
Educational Center**



THANK YOU

103 Chestatee Industrial Park Dr. | Dahlonega | GA | 30533 |
404-806-7650 | sales@rubberfloorsandmore.com